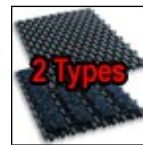
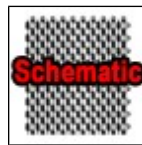


## Helix Z1 Interlocking Floor Mat Entrance Tiles



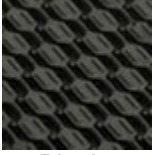
Helix Z1 Interlocking Floor Mat Entrance Tiles are a heavy-duty, multi-directional entryway tiles that effectively scrapes dirt and debris from shoes, while allowing the debris and moisture to fall below the tiles, keeping the walking surface cleaner, drier and more effective.

- The multi-directional surface pattern of Helix Z1 Modular Tiles aggressively scrape dirt and snow from shoes and keep the debris and water below the walking surface.
- Helix Z1 tiles easily snap together for quick installs.
- Along with having a 600lb rolling load capacity, the Helix Z1 interlocking tile is high heel proof and has a slip-resistant, ADA-compliant surface to prevent trips and falls.
- Helix Z1 is ideal for use in recessed areas as well as wall-to-wall vestibule applications.
- Each Helix tile is 7/16" thick and measures 9" x 12"
- 10 tiles (7.5 sq ft) per case.

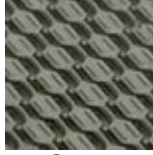
### Standard Sizes (Approximate)

Size	Qty. 1-25	Qty. 26-50	Qty. 51+	Qty. 100-250
1 Tile	\$18.69	\$17.81	\$17.19	\$16.56
1 Case (10 Tiles)	\$178.13	\$172.19	\$165.63	\$161.25

### Standard Colors



Black



Grey



Brown